









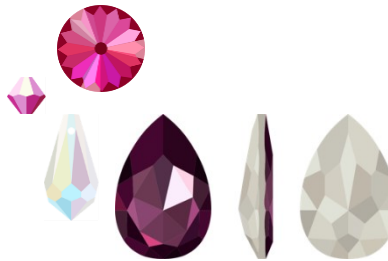
## Supply list Queen Miriam:

### Miyuki Seed beads:


25 grams	Seed beads 11°	SB11	 Color A Main Color
5 grams	Seed beads 11°	SB11	 Color B
6 grams	Seed beads 11°	SB11	 Color C
4 grams	Seed beads 15°	SB15	 Color

### Swarovski:

6 pieces	Rivoli 14mm	RIV14	
110 pieces	Bicones 3mm	BIC3	
5 pieces	Drops	DR	
1 piece	Pear 4327	SP	



### Pressed Beads:

14 pieces	Pressed Beads 4mm PB4	
-----------	-----------------------	---

### Findings:

Clasp



### Extra:

Fireline 0.12mm  
Beading needle #12

